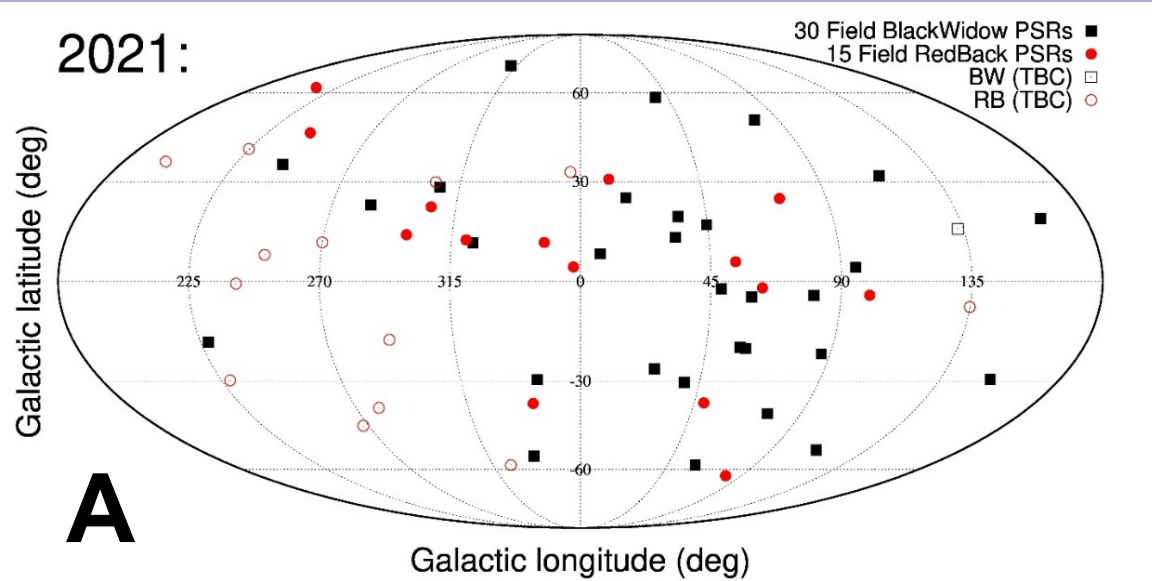


Compact binary MSPs and the e^+ excess

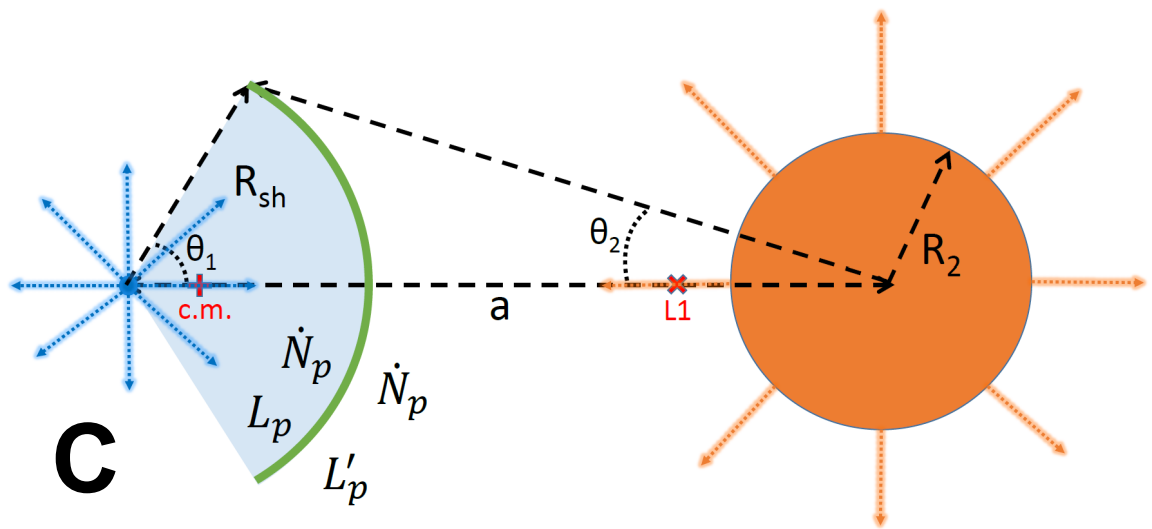
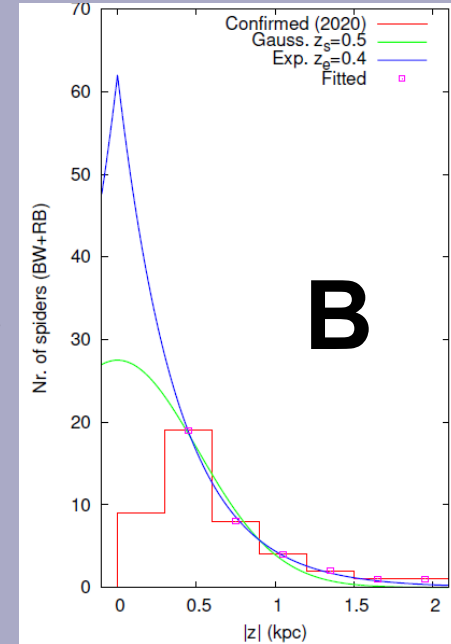
Manu Linares (GAA@UPC & IEEC, Barcelona) & Michael Kachelriess (NTNU, Trondheim): [2021JCAP...02..030L](#)



>50 spiders discovered in a decade!
($d \sim 0.5-5$ kpc; $L_{sd} \sim 10^{34}-10^{35}$ erg/s)

Exp. scale height: $z_e = 0.4 \pm 0.1$ kpc
(2-3 “hidden nearby”: $d < 1$ kpc; $|\ell| < 5^\circ$)

Total: 2-7 thousand spiders in the Galaxy
(we simulate 5000)



Intrabinary shock
(re)acceleration:
10% L_{sd} , up to ~ 10 TeV

Currently known spiders:
Minor contribution e^+ flux

Nearby spider || GMF:
Major contribution e^+ flux

