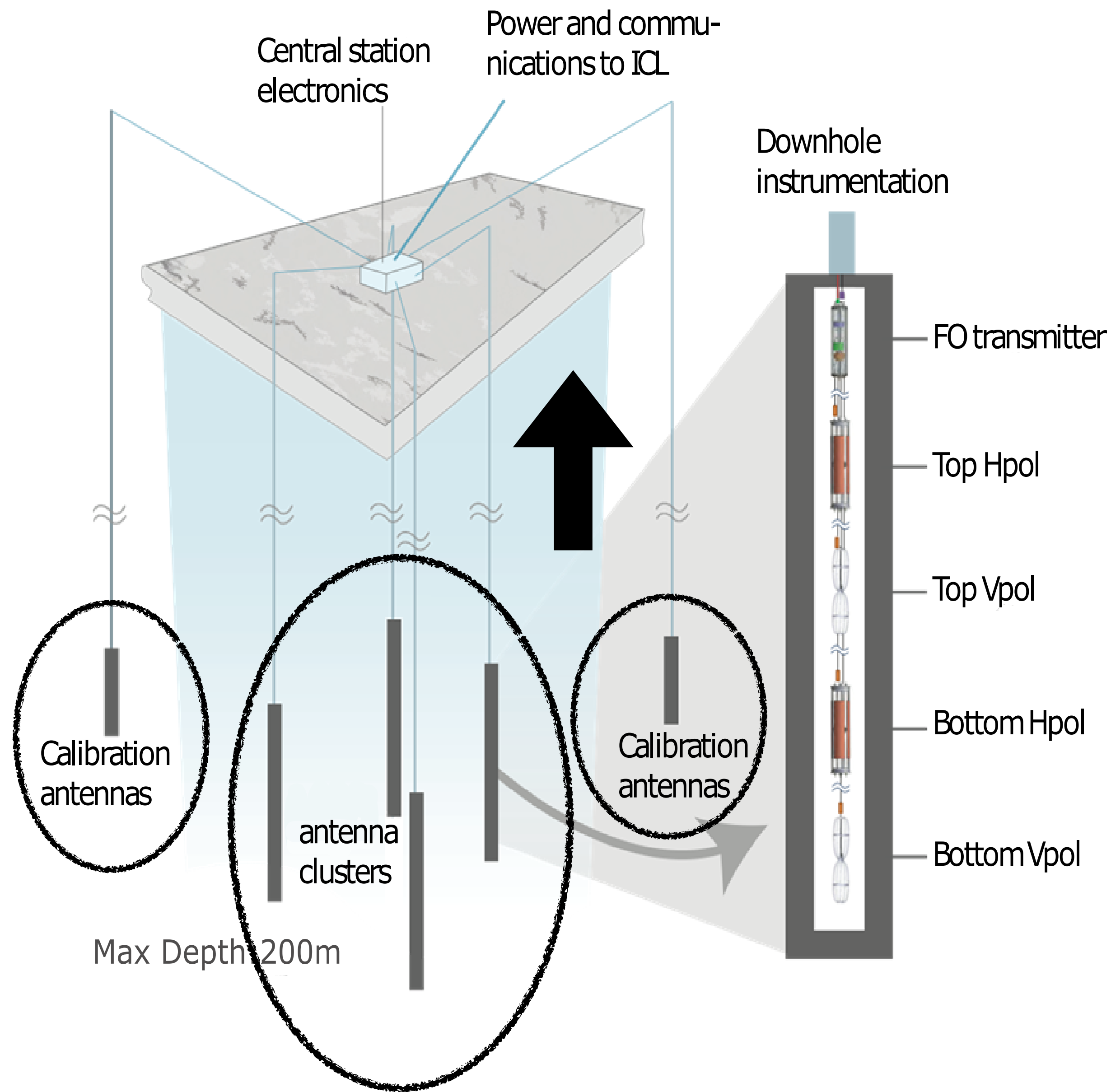
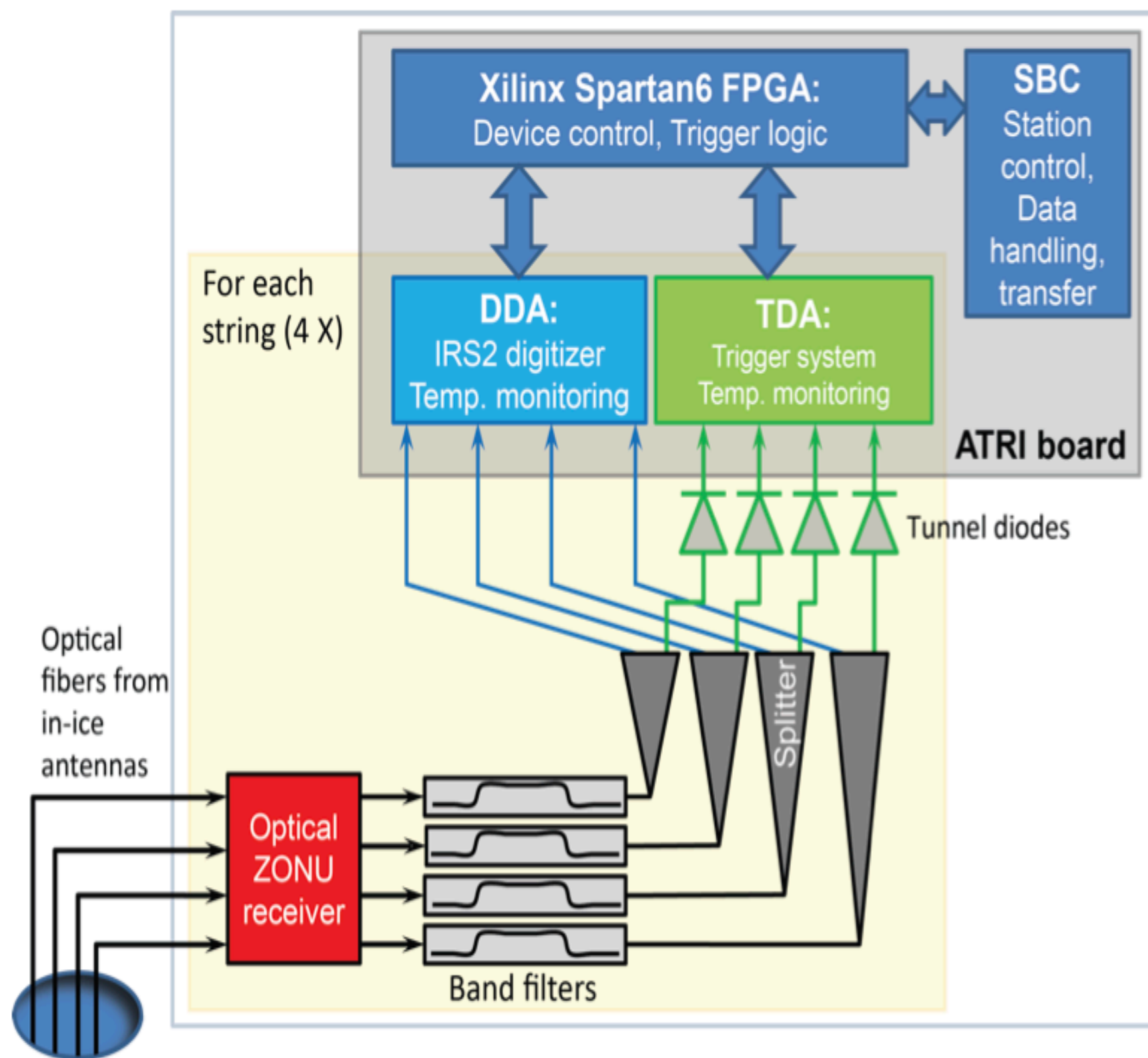
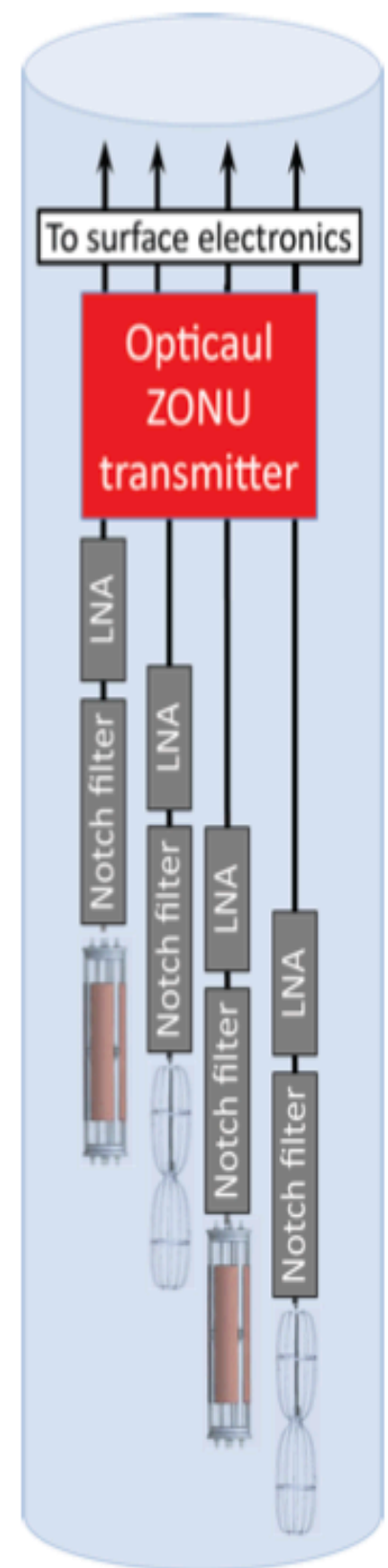
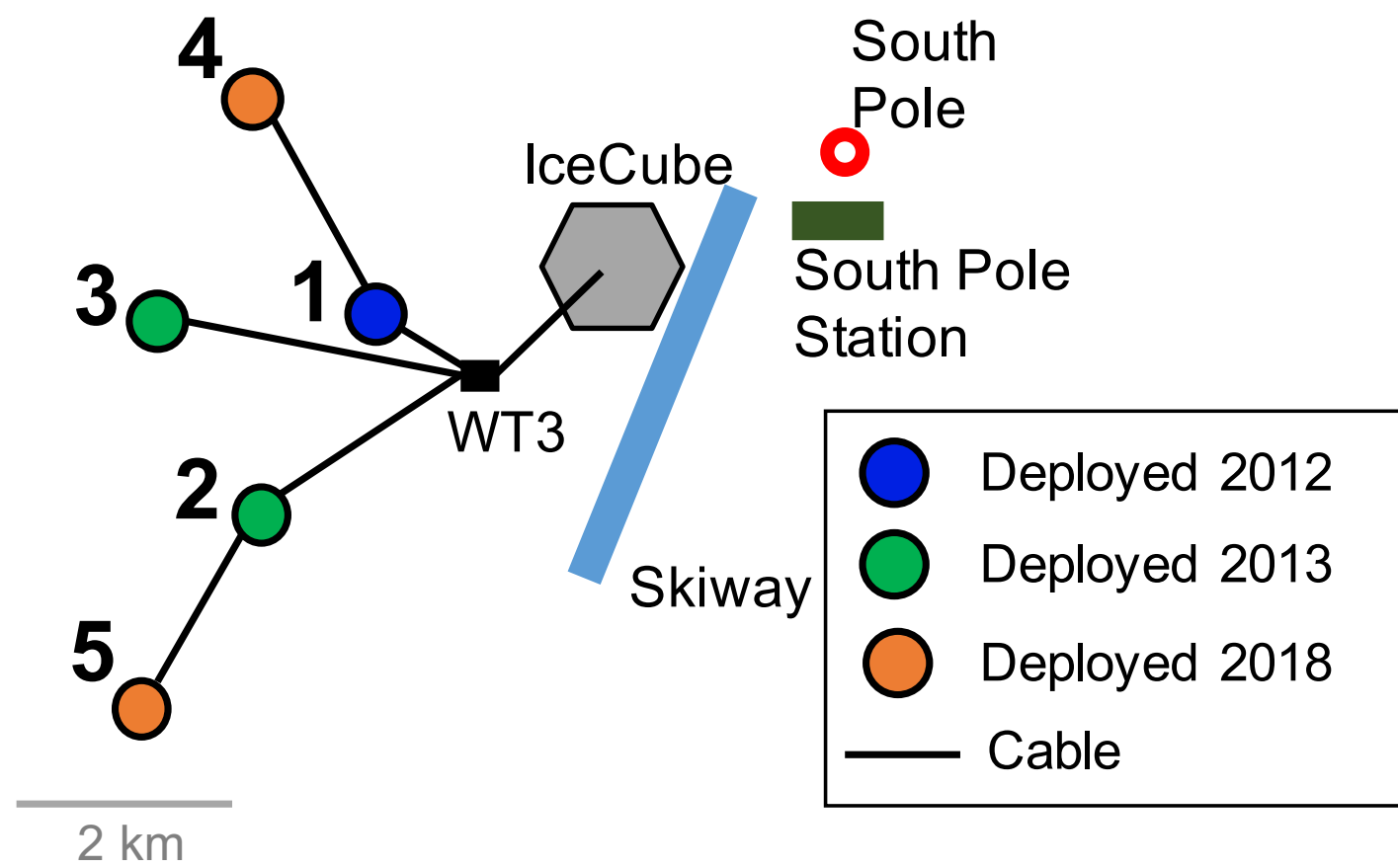




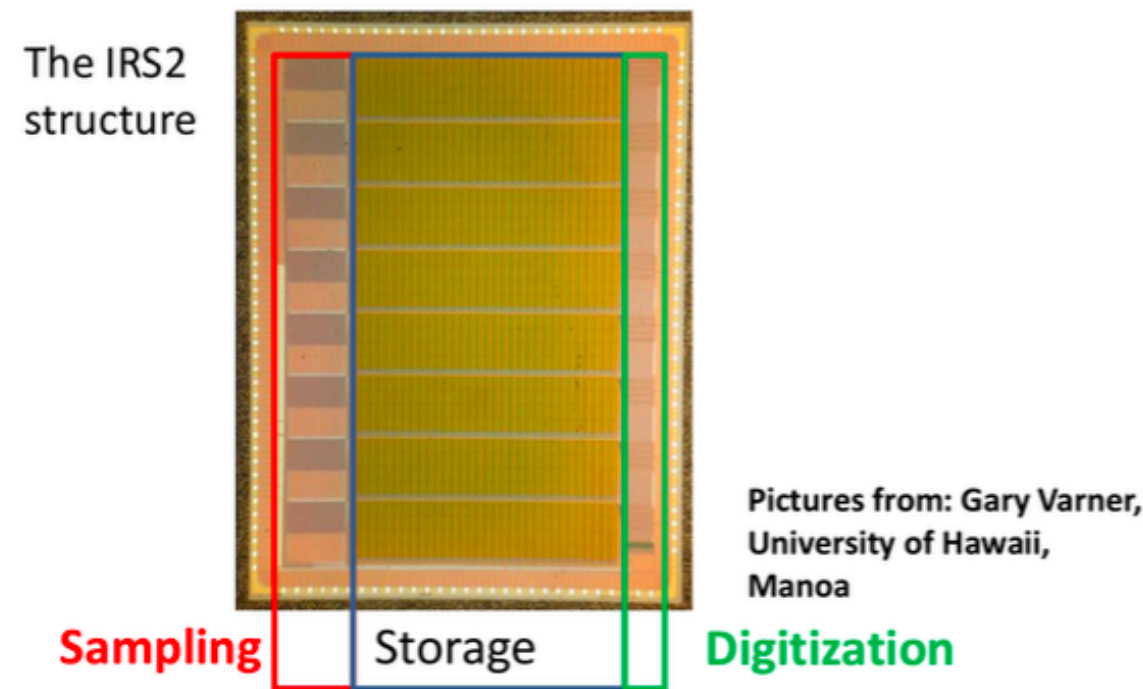
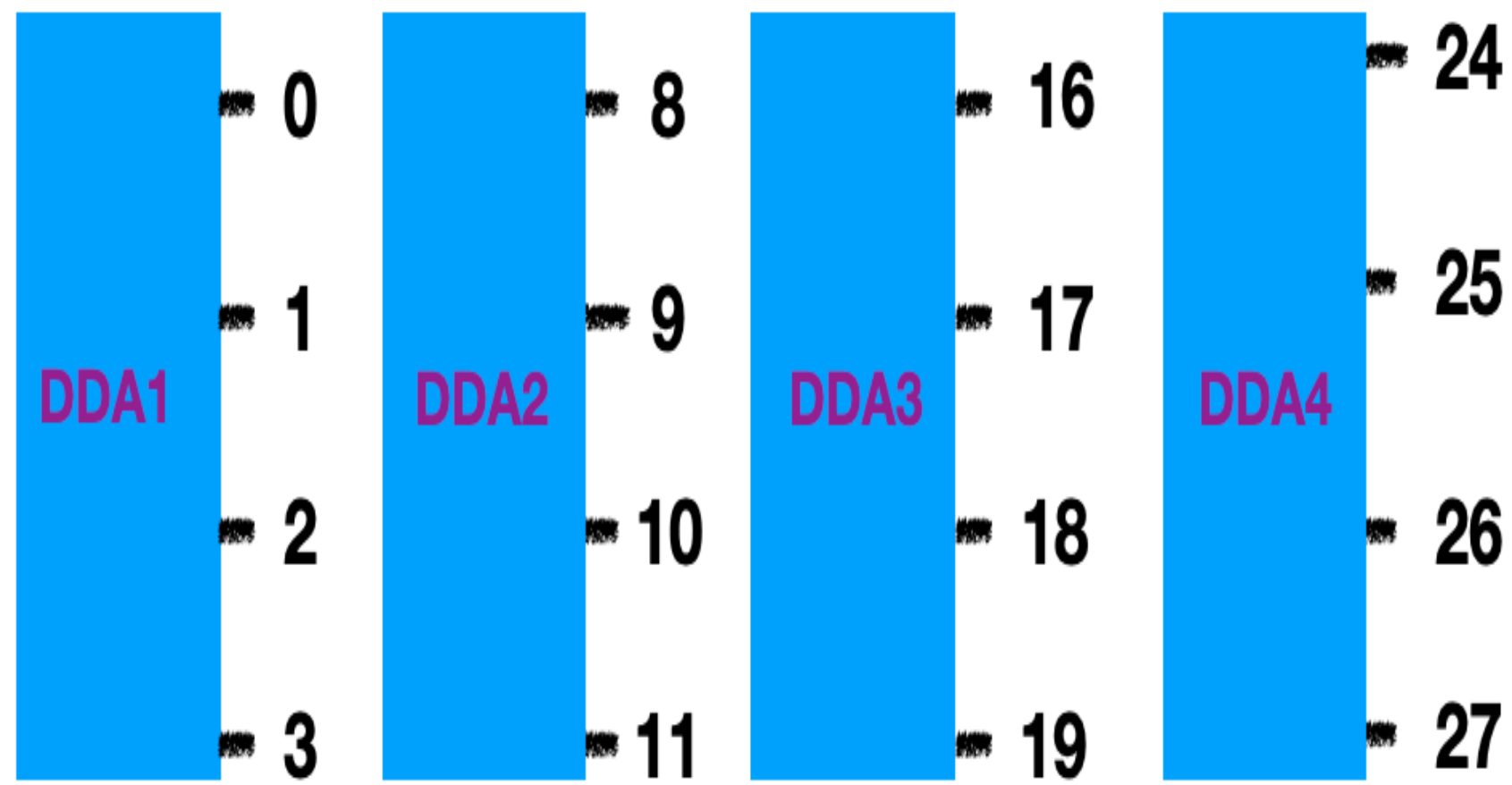
The Calibration of the Geometry and Antenna delay in Askaryan Radio Array Station 4 and 5

Paramita Dasgupta, Université Libre de Bruxelles, Belgium

For The ARA Collaboration

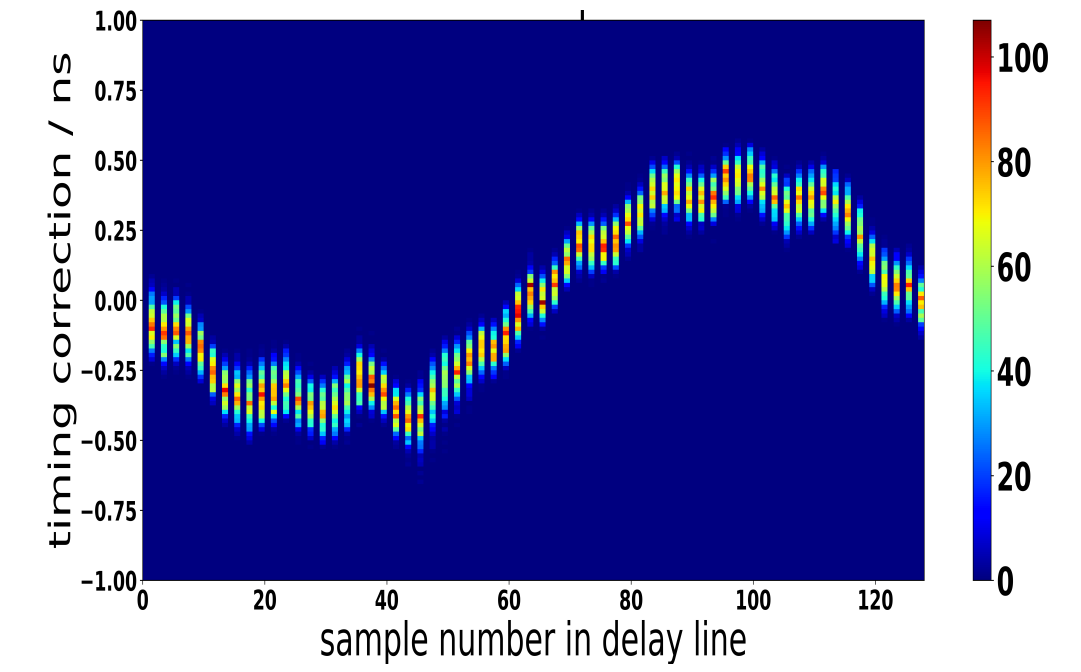


4 IRS2 Digitizing chips in each ARA station : total 16 RF channels

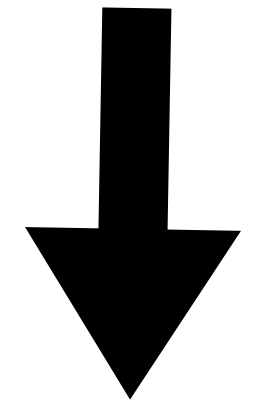


128 sampling capacitor to sample input RF signal

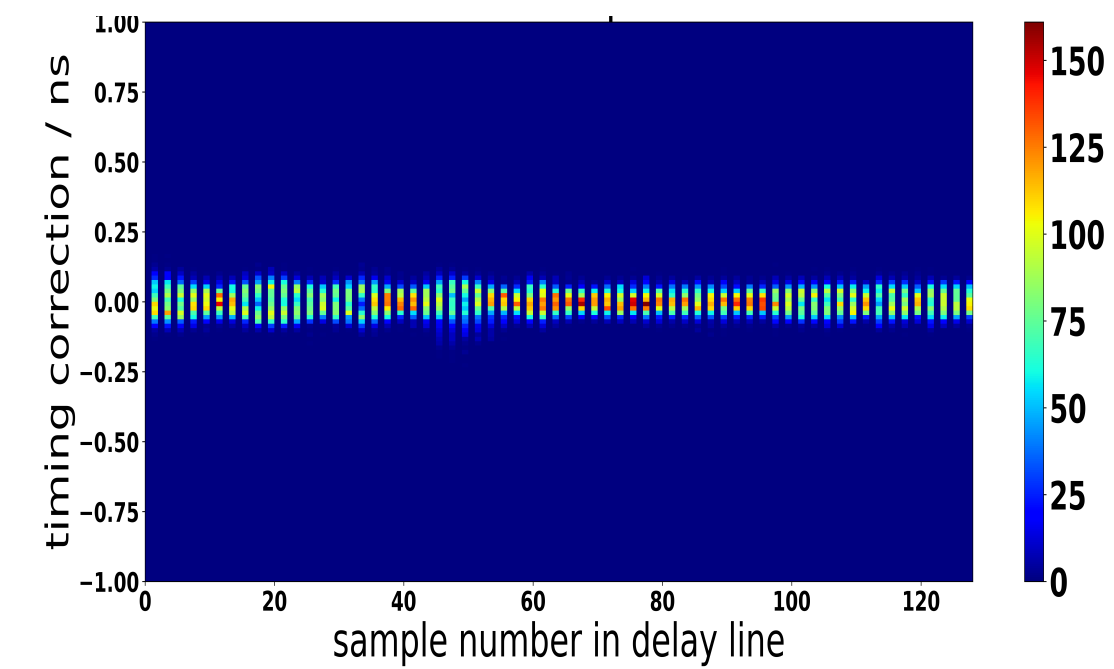
Before Timing Calibration



Timing Calibration

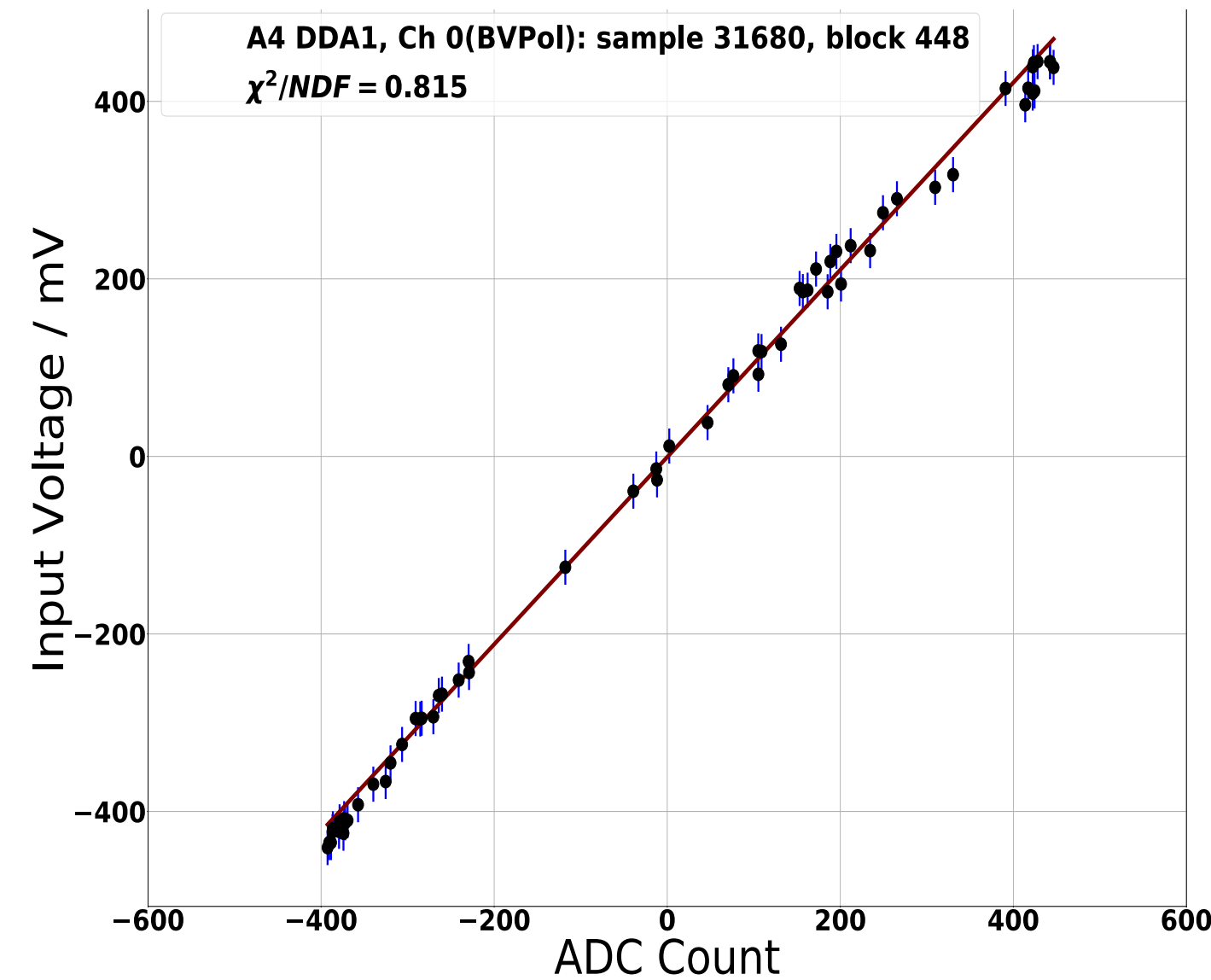


After Timing Calibration

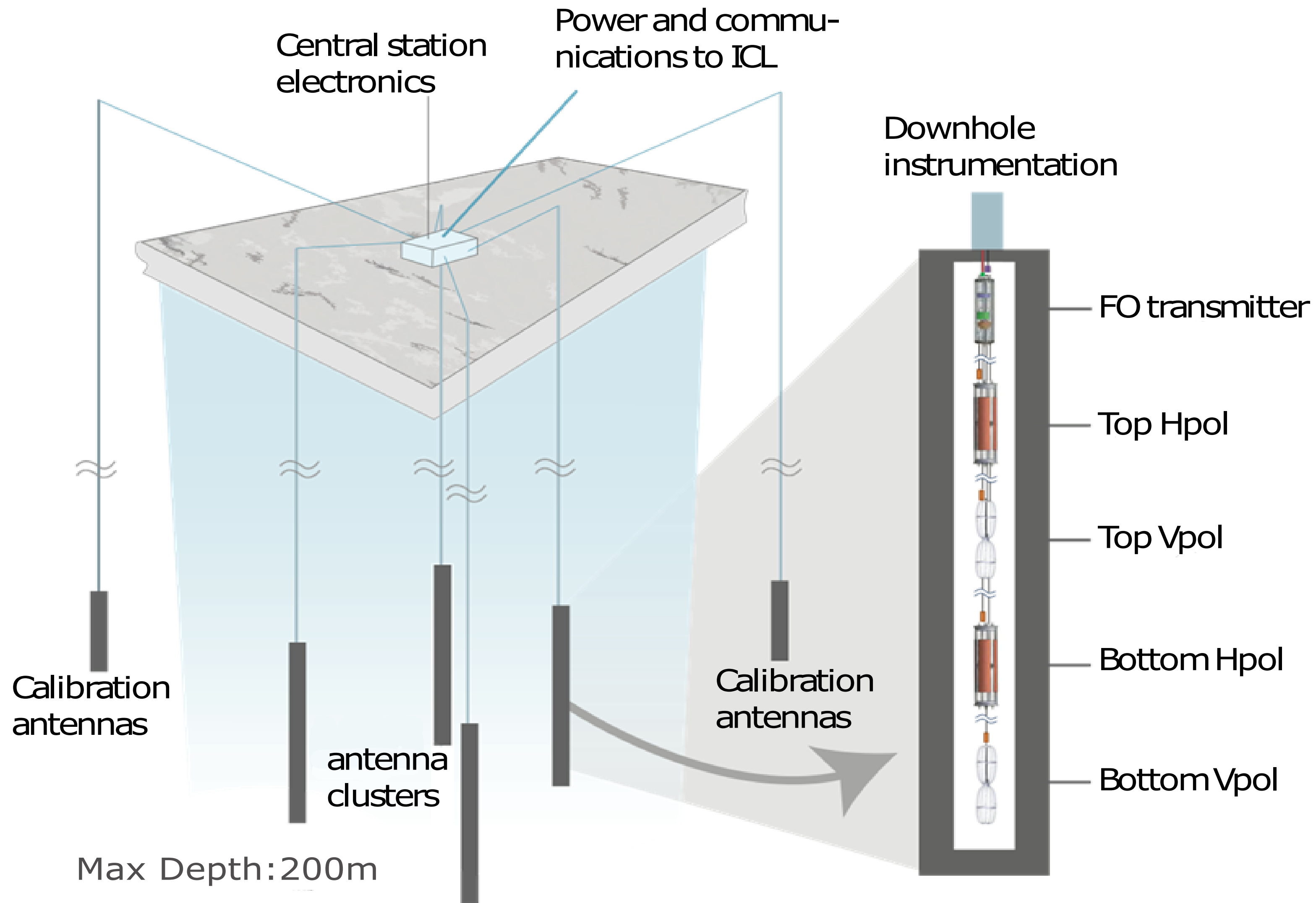


32,768 storage capacitors to store input RF signal

Voltage Calibration



Calibration of ARA Station Geometry and Antenna location in the ice



The antenna positioning with ~10 cm precision is obtained with our calibration methodology.
A5 : fully calibrated
A4 : work in progress

**Thank you for your attention
Please check more details on the poster !**

