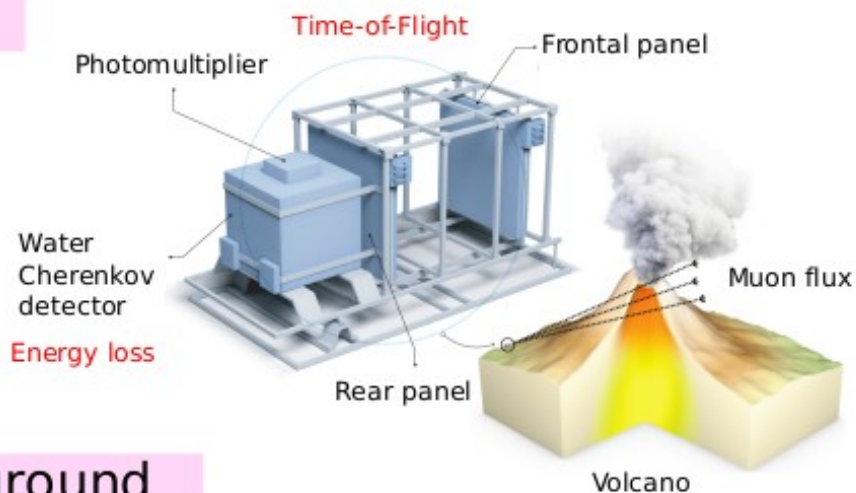
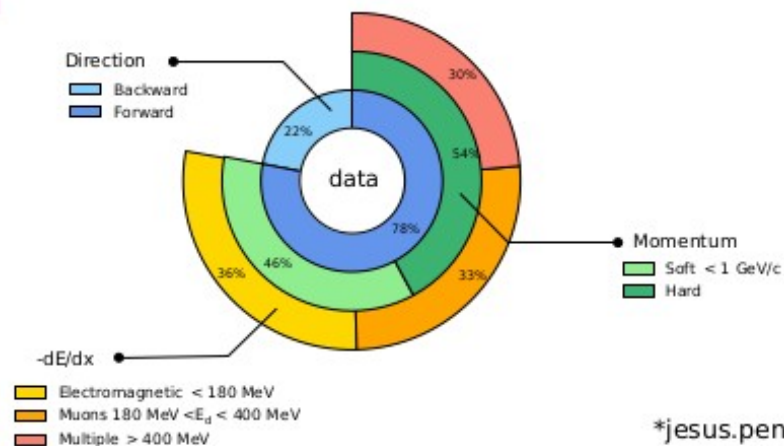


MuTe



Results

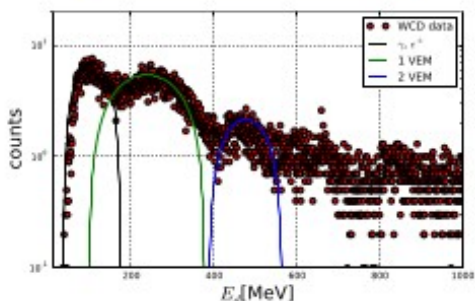
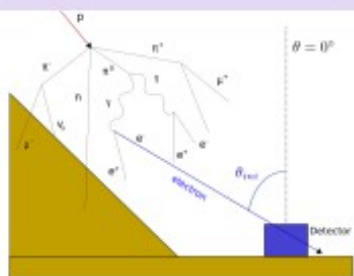
Particle flux crossing through the MuTe



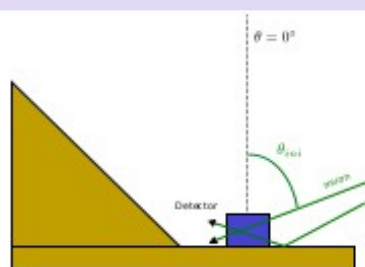
*jesus.pena@correo.uis.edu.co

Background

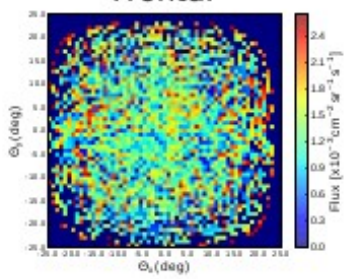
EAS soft-component



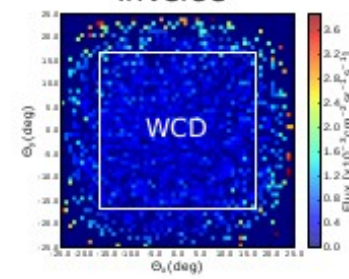
Inverse trajectory particles



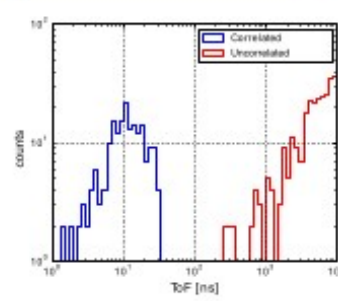
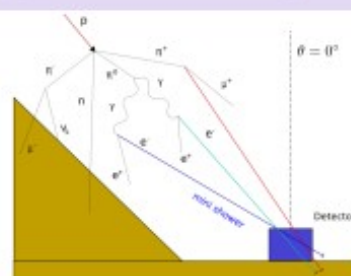
Frontal



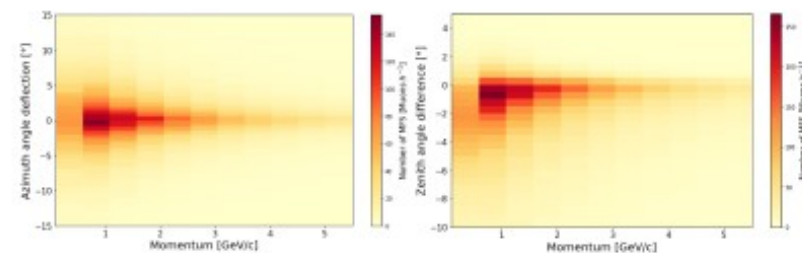
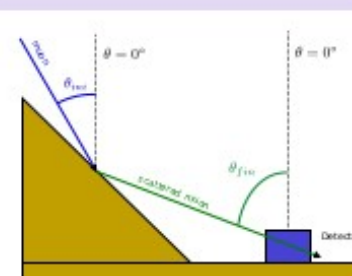
Inverse



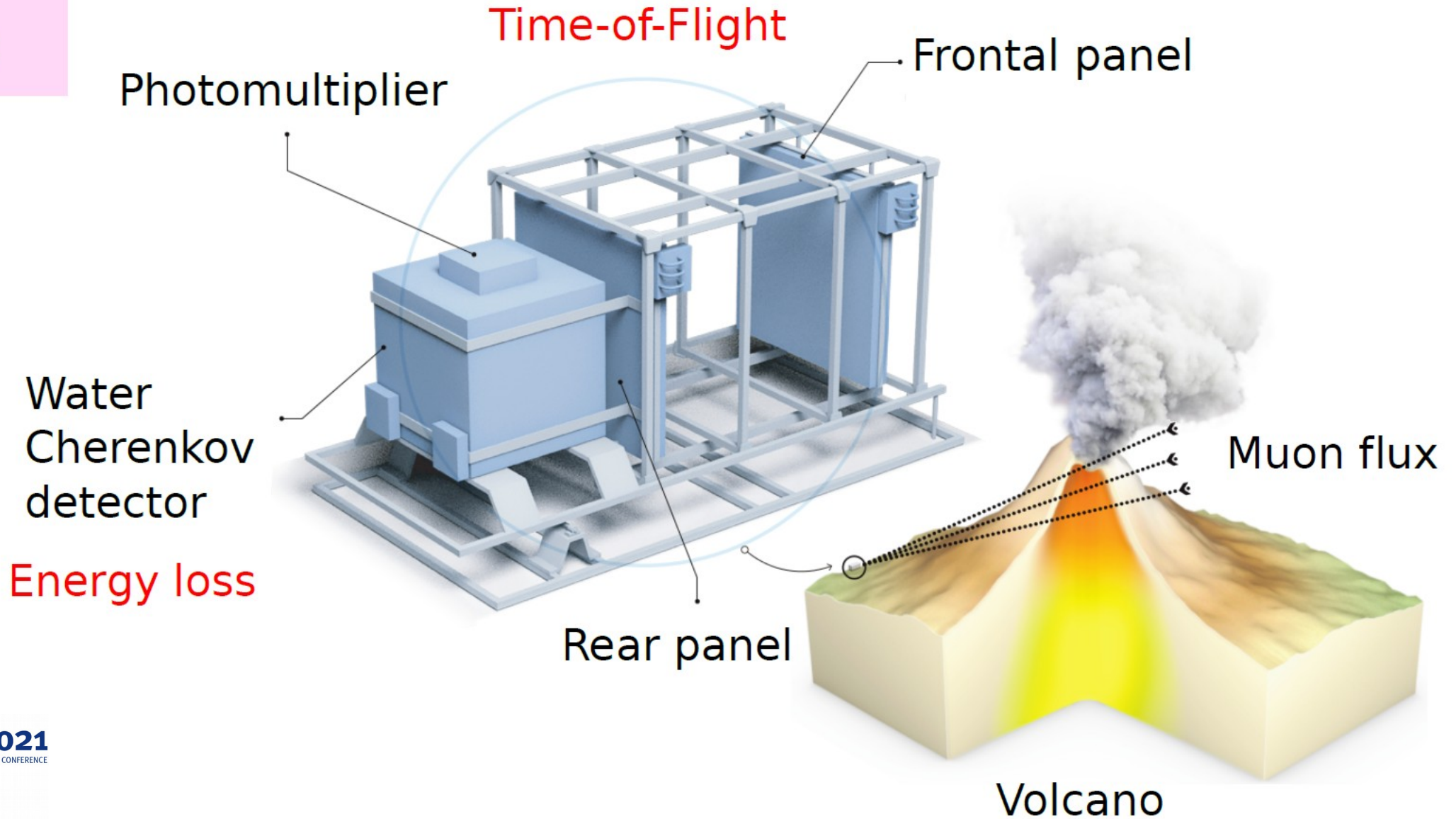
Multiple-particle



Muon forward scattering

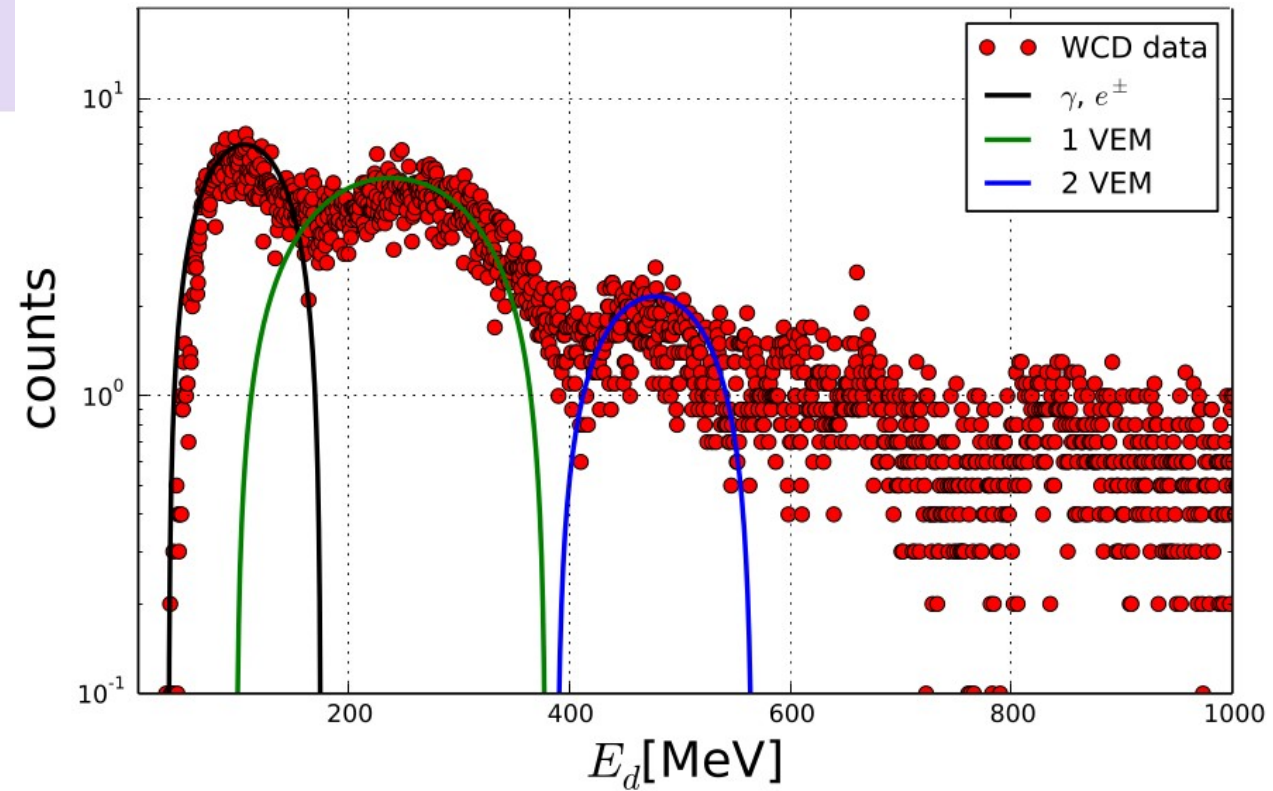
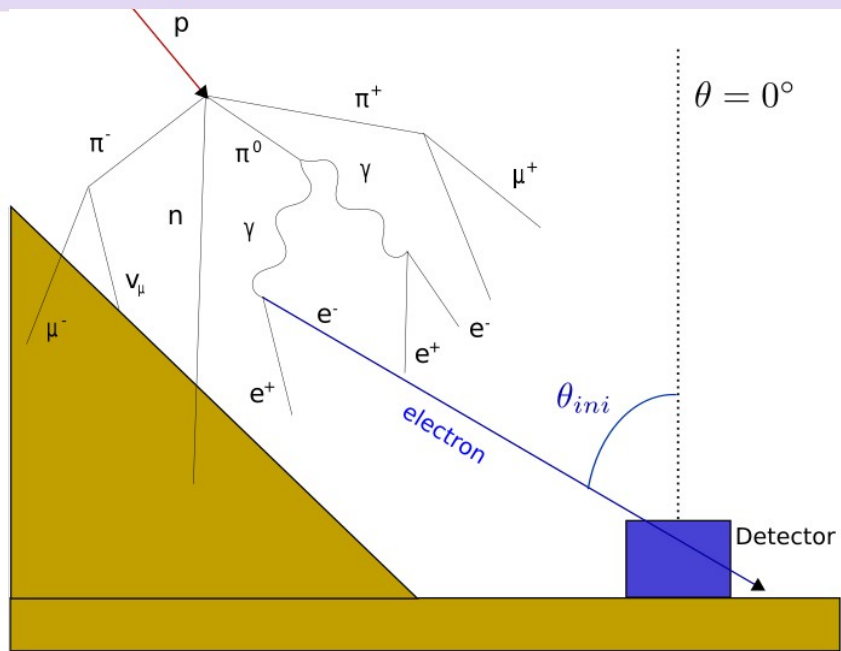


MuTe



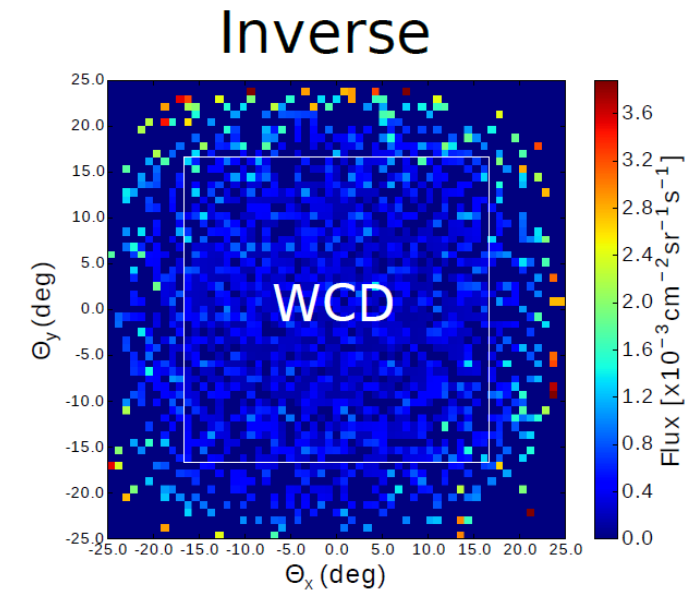
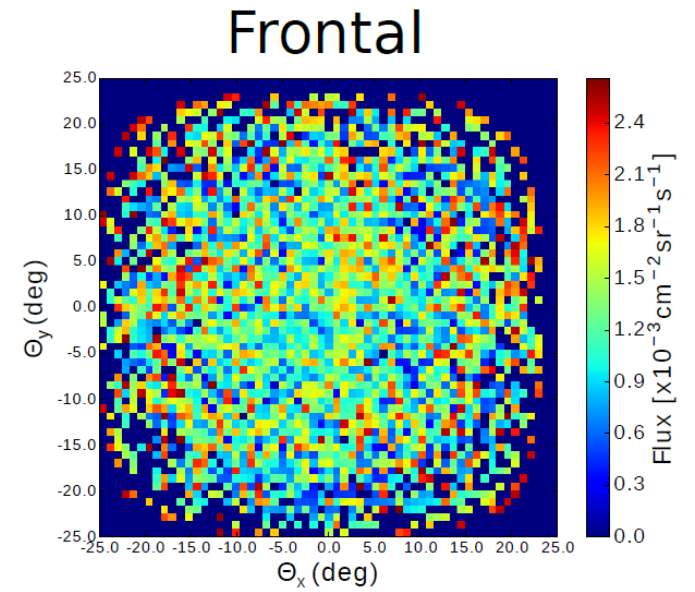
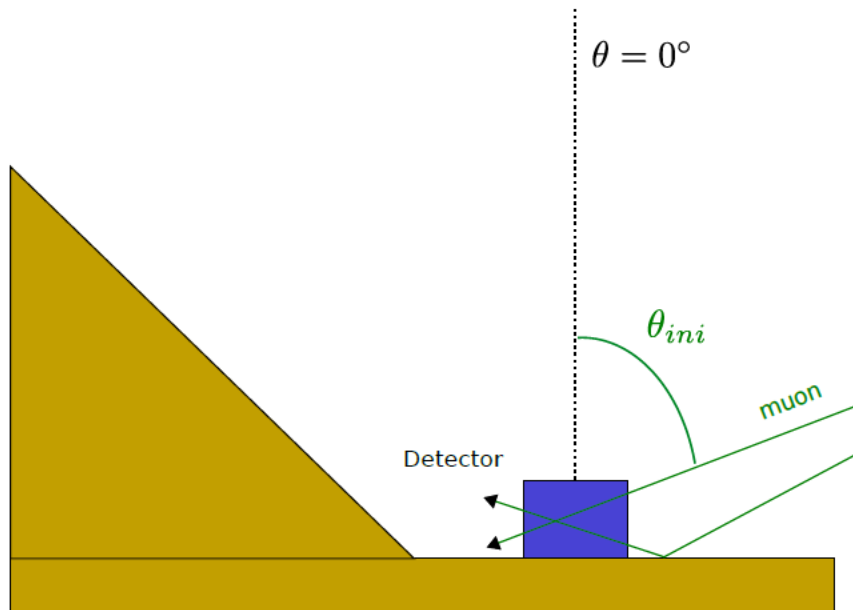
Background

EAS soft-component



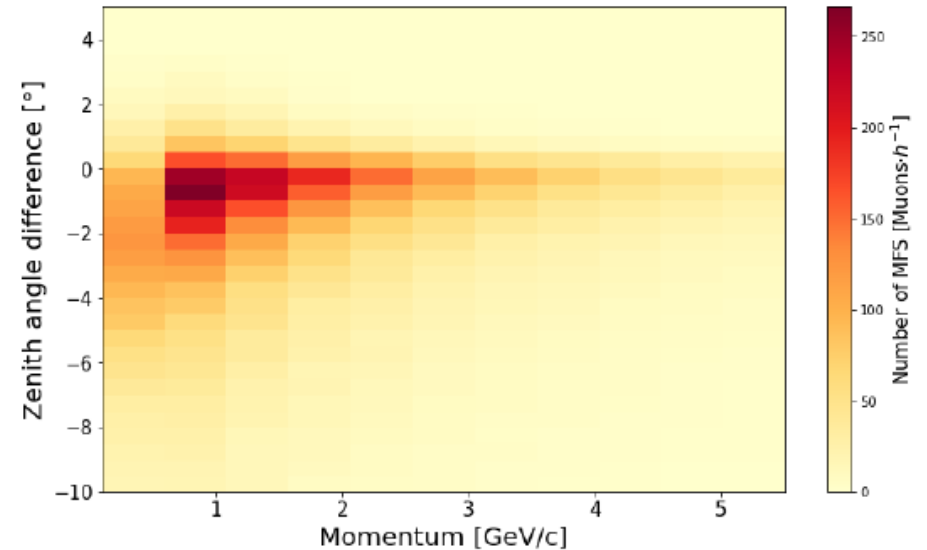
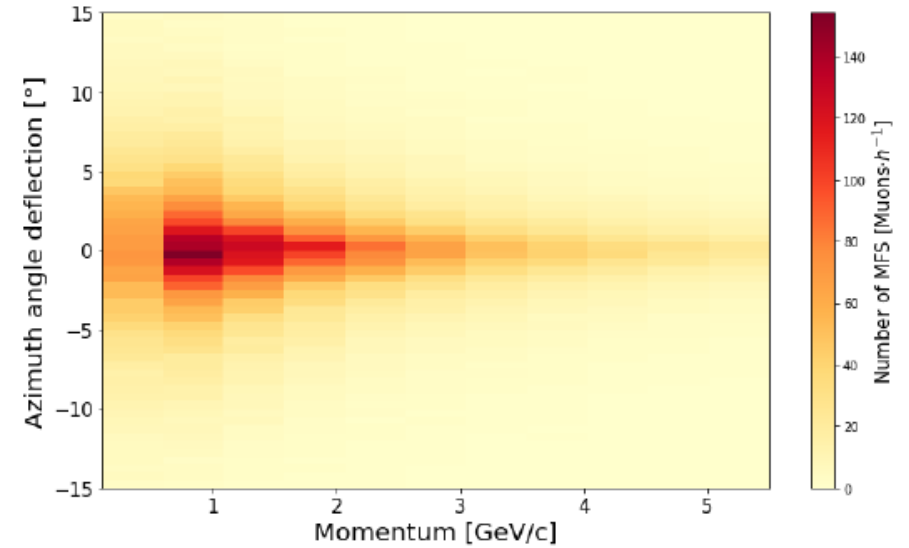
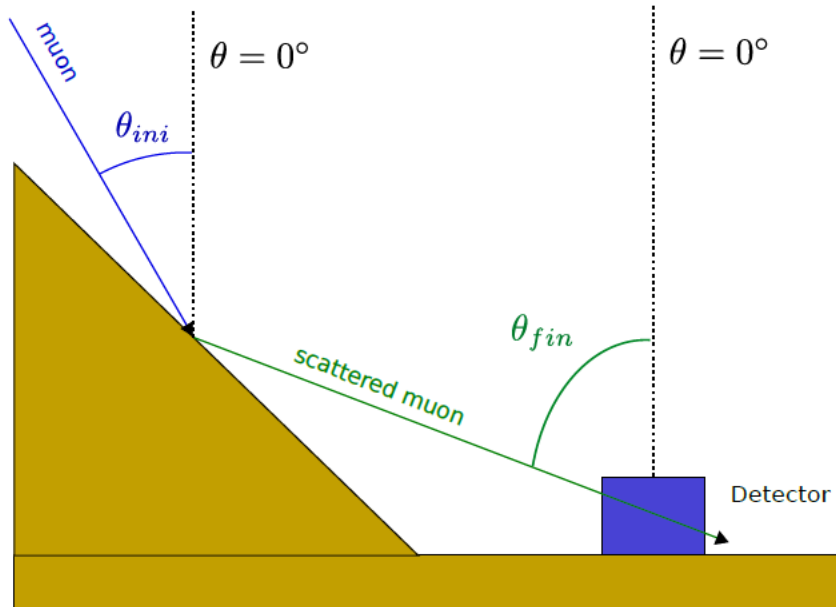
Background

Inverse trajectory particles

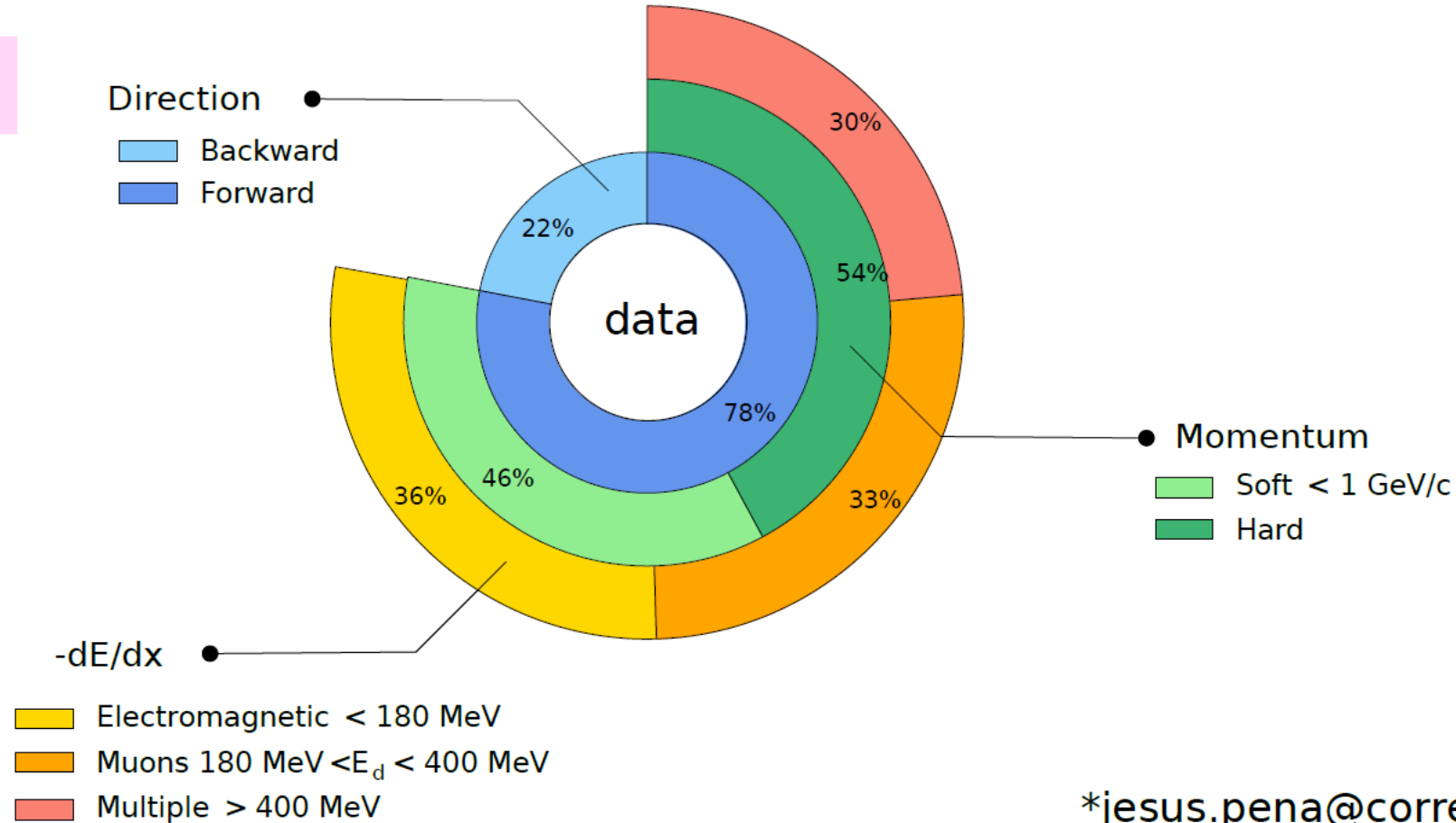


Background

Muon forward scattering



Results



*jesus.pena@correo.uis.edu.co