

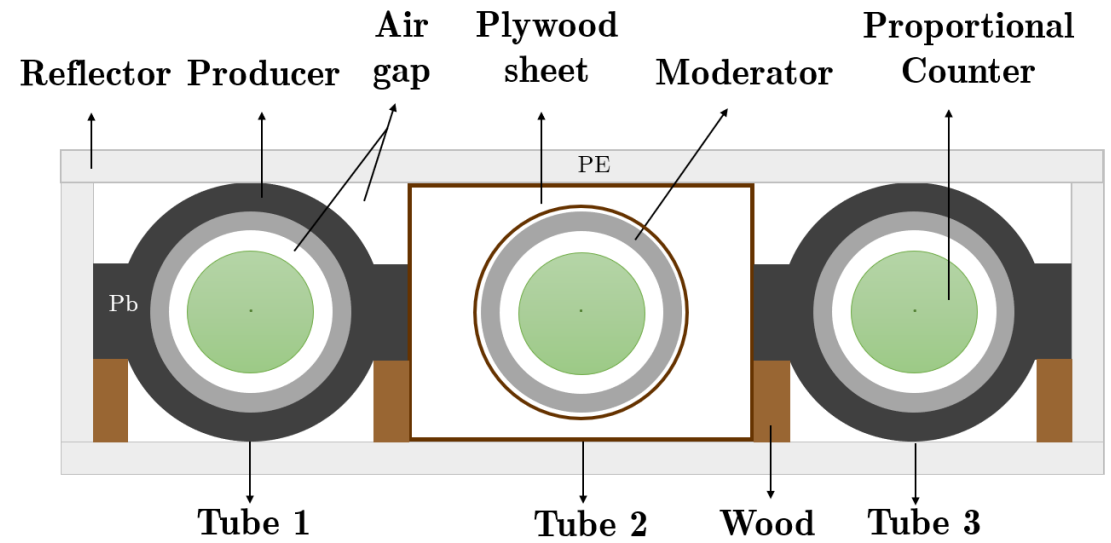
RESPONSE FUNCTIONS OF SEMI-LEADED NEUTRON MONITOR COUNT RATES AND LEADER RATES FROM LATITUDE SURVEYS DURING 2019-2020

P. Yakum, S. Khamphakdee, W. Nuntiyakul, D. Ruffolo, P. Evenson,
P.-S. Mangeard, A. Sáiz, C. Banglieng, A. Seripienlert, P. Jiang,
P. Chuanraksasat, K. Munakata, J. Madsen, B. Soonthornthum, S. Komonjinda

Changvan neutron monitors



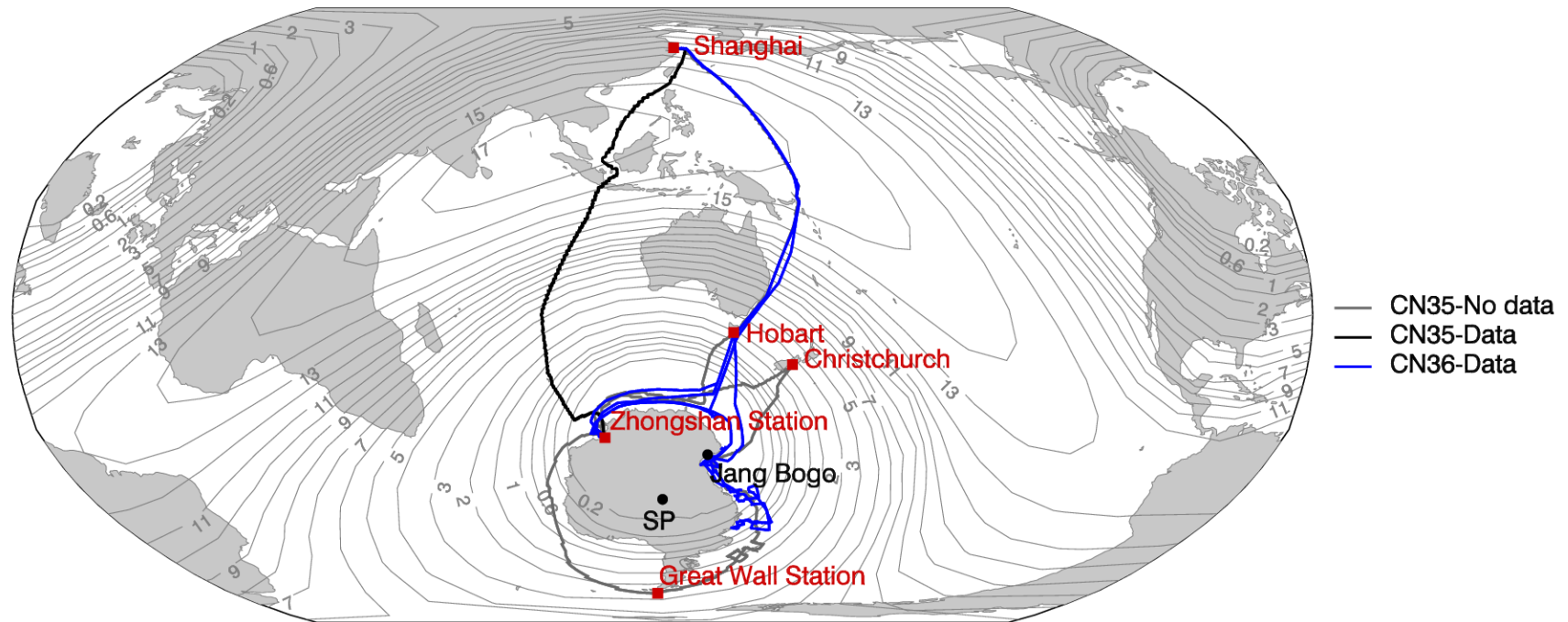
(a)



(b)

Observation

Survey year 2019 (CN35) covers the voyage from 2 November 2018 to 11 March 2019.
Survey year 2020 (CN36) covers the voyage from 21 October 2019 to 22 April 2020.



Response functions

