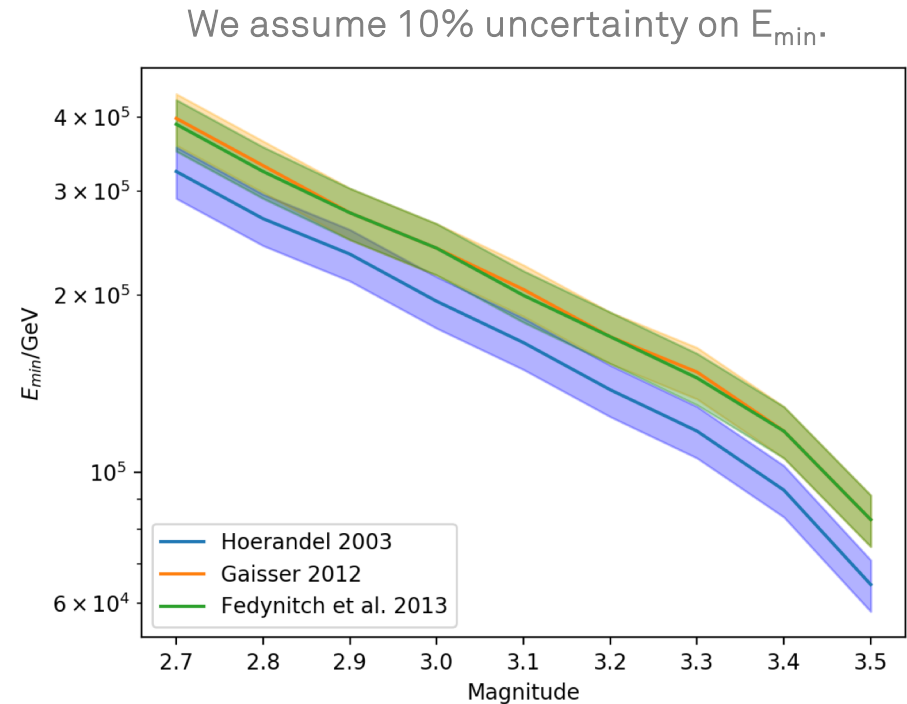
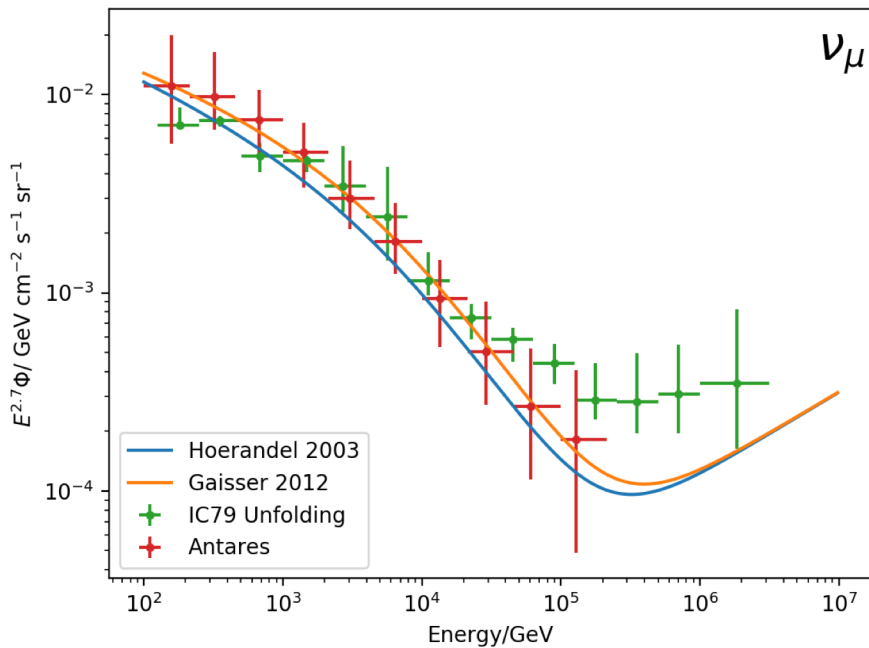

Detection of Small Scale Components in Power Law Spectra

Tim Ruhe, Wolfgang Rhode

International Cosmic Ray Conference 2021

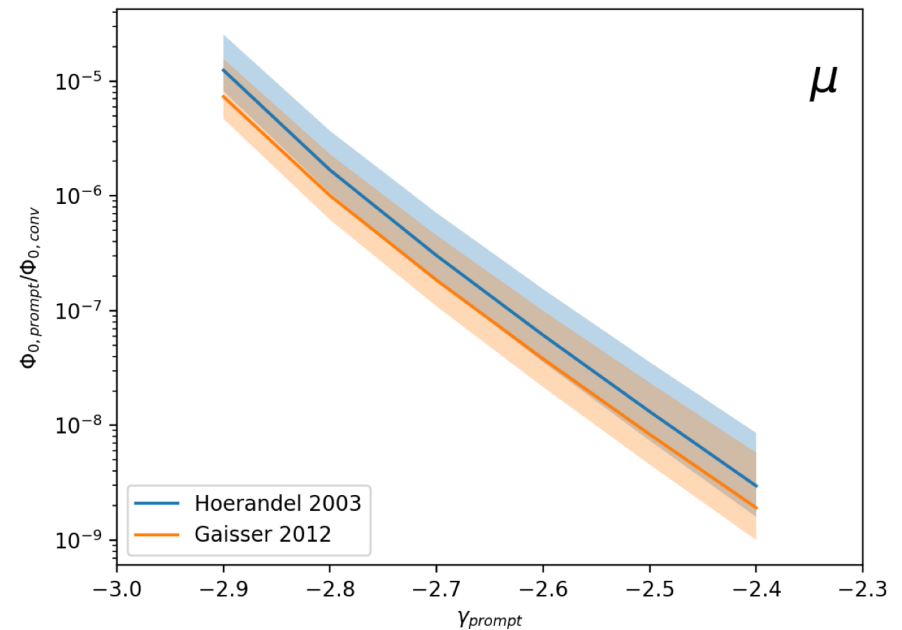
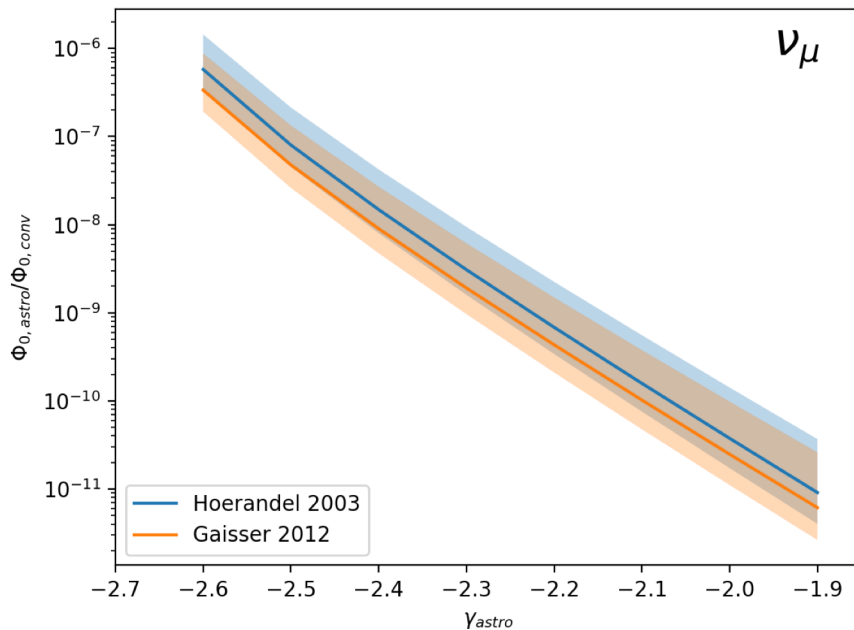
tim.ruhe@tu-dortmund.de

Power Law Spectra and their Minima



Considering the Minima of energy-weighted lepton spectra, provides valuable information, and might allow to distinguish between different models.

Extraction of Physical Quantities



$$\frac{\Phi_{0,int}}{\Phi_{0,conv}} = E_{min}^{\gamma_{conv} - \gamma_{unkn.}} \frac{(\gamma_{conv} + m)}{-(\gamma_{int} + m)}$$

We assume a 50% uncertainty on E_{min} .